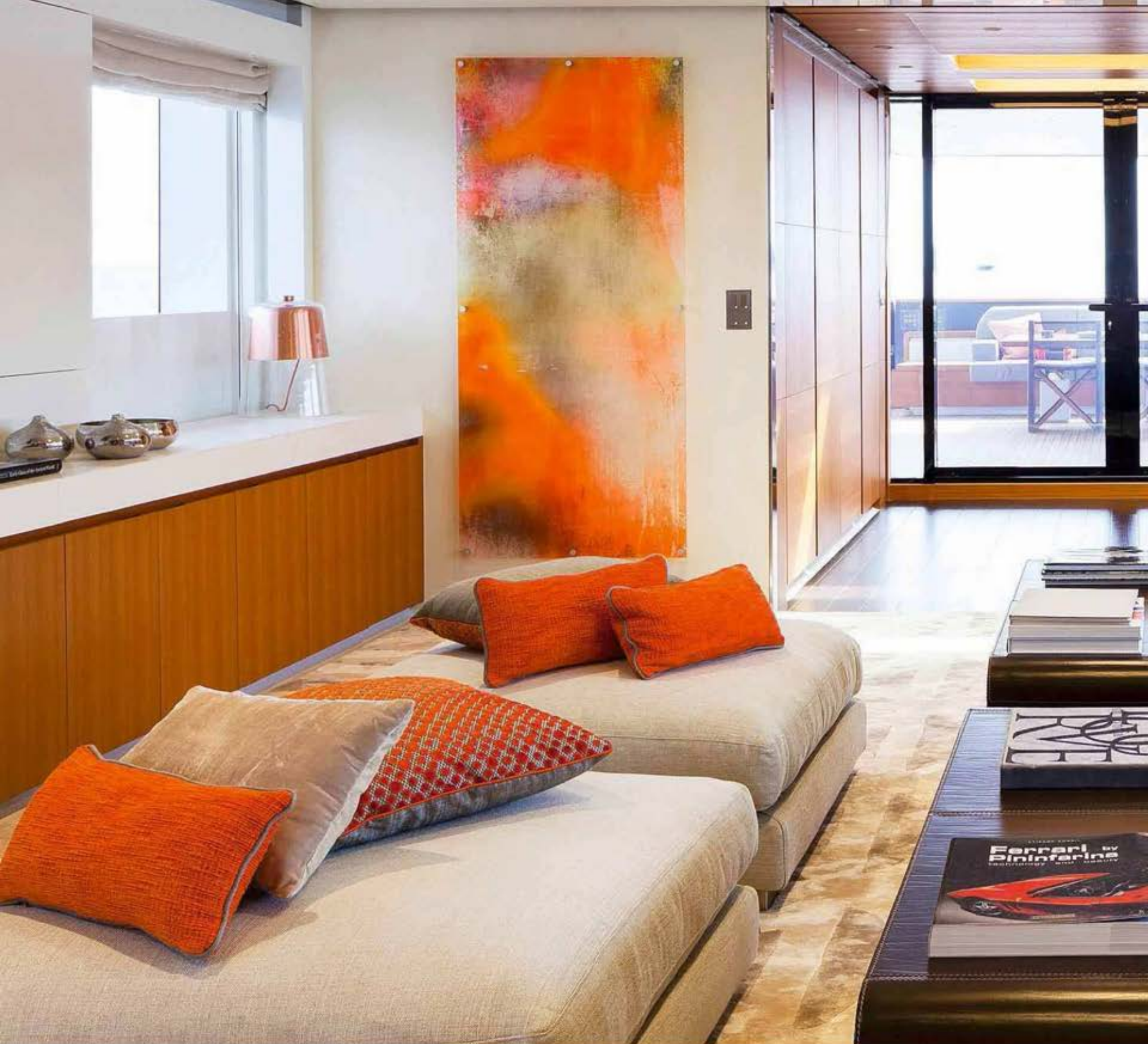


➤ BAGLIETTO 43 M FAST PACHAMAMA

← EXTRA

A NEW DIRECTION



THE ELEGANT, AERODYNAMIC AND BOLD PROFILE OF THE BAGLIETTO FAMILY FEELING MAKE THIS 43-METRE YACHT AN EYE-TURNER REFLECTING THE RENEWED DYNAMISM CHARACTERISING THE YARD

by Marta Gasparini



➤ BAGLIETTO 43 M FAST PACHAMAMA

← EXTRA



Above, in the photos from left to right, the owner's full-beam cabin with its own bathroom, that of the Vip and the double. In the photo below right, the dining room with table for ten.

Called *Pachamama*, this is the symbol of the new direction adopted by Baglietto, which with this 43-metre yacht inaugurate the Fast range designed by Francesco Paszkowski, responsible for the exterior and interior, in collaboration (for the décor) with Margherita Casprini, whose refined and elegant touch is appreciated as soon as one steps aboard. The yard has instead been responsible for the naval engineering, with the construction all of aluminium to assure a notable performance (28 knots cruising speed, and 33 knots top speed). «*Pachamama*», explains Paszkowski, «stems from

the demand to have a new-generation planing boat, but recognisable as a Baglietto. Our task was thus reinterpret a past history. So for the exterior, the key elements are the sleek line of the hull, which revives the Baglietto tradition of fast planing boats, the slim configuration of a bridge and a half, with a compact, lightweight and aerodynamic superstructure, the band of dark colour – only of glass – of the superstructure that runs parallel to the gunwale from stem to stern and the external doors which, when closed, fit flush with the glass».

Designed to accommodate an owner with a large family and friends in tow, *Pachamama* has the char-



strolling barefoot on the teak deck is a sensory delight. It is a flexible area that can become a convivial space with sofas, a dining area al fresco or just for lying in the sun. Concerning the presence of so much teak, Margherita Casprini explains: *«It is the only wood used. As for the other materials, we have chosen natural stone (Limestone Silk) for the floors, the top of the bathrooms and some furniture and dark brown leather with visible stitching on each side of the furniture. This is seen, for example, in the beds, where the structure is in teak and leather is used as a lining».*

At on the main deck one can sit in the shade enjoying the breeze thanks to a system of curtains that closes the area for shade and privacy. The Baglietto 43 enhances social relations in the open air in order to maximise contact with the sea both whilst under way and at anchor.

Going below, one reaches the bar area where the light comes from two skylights overlooking the fly-bridge and the windows that "light up" this part of the saloon, which is usually more shady. Teak and paint alternate in this area too, while the furniture against the bulkheads in the saloon is lined with stone. On the same deck, the forward outdoor area is designed as an outdoor saloon with a spectacular





rooftop sundeck and, at the end, a heated spa tub.

Then we head to the fly bridge to discover the wheelhouse with a sporting look and where the sense of make it perfect for focussing at the helm. «*Behind it*», relates Paszkowski, «*an area has been planned with two sofas to allow guests to enjoy a first-hand experience of navigation and for children to spend time with PlayStation thanks to the screen placed over one of the two sofas*». Outside, over an area of 75 square metres there are a solarium located aft, a central conversation area and a dining area in the shade of the topmast.

However, there is plenty not only of shared spaces, but also privacy and reserved areas. On the lower deck, there are five double cabins (one Vip with double bed and three with single beds) including the owner's suite. The placing of the latter at this level might raise eyebrows among the purists of traditional layouts, but a careful look is all it takes to be convinced that the choice was the right one. The gen-

▶ ABOARD, EXPERIENCE AND TRADITION MERGE IN A MEETING BETWEEN PAST AND PRESENT, READY FOR GREAT SAILS





rooftop sundeck and, at the end, a heated spa tub.

Then we head to the fly bridge to discover the wheelhouse with a sporting look and where the sense of make it perfect for focussing at the helm. «*Behind it*», relates Paszkowski, «*an area has been planned with two sofas to allow guests to enjoy a first-hand experience of navigation and for children to spend time with PlayStation thanks to the screen placed over one of the two sofas*». Outside, over an area of 75 square metres there are a solarium located aft, a central conversation area and a dining area in the shade of the topmast.

However, there is plenty not only of shared spaces, but also privacy and reserved areas. On the lower deck, there are five double cabins (one Vip with double bed and three with single beds) including the owner's suite. The placing of the latter at this level might raise eyebrows among the purists of traditional layouts, but a careful look is all it takes to be convinced that the choice was the right one. The gen-

▶ ABOARD, EXPERIENCE AND TRADITION MERGE IN A MEETING BETWEEN PAST AND PRESENT, READY FOR GREAT SAILS



B

BAGLIETTO 43 M FAST



EXTERIOR DESIGN
F. Paszkowski

INTERIOR DESIGN
F. Paszkowski

SPECIFICATIONS
Length o.a. m 43.65 - beam m 8.3
draft m 1.70 - displacement at half load t 250
water tank lt 5,800 - guests 10 - crew 7
construction material aluminium

ENGINES
2 x Mtu 16V 4000 M93L 3,440 kW at 2,100 rpm
fuel tank lt 41,000 - top speed 33 knots
cruising speed 28 knots

ADDRESS
Cantieri Navali Baglietto, La Spezia, Italy
tel. 0039 0187 59831, www.baglietto.com

On the left page, the galley with movable partition that makes it possible to modulate the space, dividing it from the dining area. Below, the fly bridge is a true invitation to leisure. Above, the wheelhouse inspired by the world of cars with, aft of it, a convivial space which is also designed as a playroom.

erous spaces, the layout over the full beam and the large windows that provide plenty of light make it a very pleasant space.

And there is plenty of space too in the bathrooms with separate wcs and in the dressing room. The forward area is completely dedicated to the crew, which has four cabins for seven staff, including the skipper. Aft of the master suite, there is the engine room with two Mtus, access to the garage and to the beach.

The electrical plant of *Pachamama* has been done by Cantalupi, which has also designed and realised the automation system, lighting design and the steaming lights.

All on-board entertainment supplied by TeamItalia and Videoworks using Samsung Curve televisions is of the latest generation. Innovative solutions have been employed also for the engine room, home to two Mtu 12V 4000 M93L engines capable of pushing *Pachamama* to a top speed of 33 knots. The yacht is classified with the highest Rina category and complies with MCA regulations.

